



2020 STUDENT SPECIAL INTEREST GROUP (SSIG) ELECTIONS

An introduction to student leadership at the state and national level

ORGANIZATION STRUCTURE AND EVENTS



National

American Physical
Therapy Association
(APTA)

State

APTA
Washington
(formerly PTWA)

Student Special
Interest Group
(sSIG)

Events

National
Conferences

GLOBAL PT Day
of Service

Legislative
Impact Day
& Student Hub

Annual
Conference

Student
Conclave

National
Advocacy
Dinner

Event Details

CSM,
Centennial

Oct 10, 2020

Jan 28, 2021
(Olympia, WA)

Oct 9-10, 2020
(Virtual)

Oct 10, 2020
(Virtual)

Spring 2021
(New event)

STUDENT SIG EVENTS



STUDENT CONCLAVE

- SATURDAY, OCTOBER 10, 2020
- Student centered programming hosted at the Washington State APTA annual conference.
- FREE FOR STUDENTS – registration open now at www.ptwa.org



LEGISLATIVE IMPACT DAY

- THURSDAY, JANUARY 28, 2021
- Student HUB for students across the state to meet, learn more about student advocacy, share experiences, and socialize.

STUDENT SIG EVENTS



GLOBAL PT DAY OF SERVICE

October 10, 2020 (or within 1 week)

An event for PTs and PTAs to engage with our local communities. sSIG will find and promote activities for students across the state or you can find your own! This is a great way to bring together students from different programs and get to know our fellow Washington PTs and PTAs.

- Pledge to participate online at <https://ptdayofservice.com/>
- Find a place to serve and post it to the PTDOS project map.



Spread the word!! Tell your friends on social media and share it with sSIG.

NATIONAL ADVOCACY DINNER

SPRING 2021

A series of dinners held across the nation for students and practitioners to learn about legislative issues affecting their profession at the state and local level and to share ways to advocate for change. 2020 event delayed due to COVID-19.

- This is our chance to meet and hear from:
 - Washington business owners
 - Legislative committee members
 - APTA Washington.



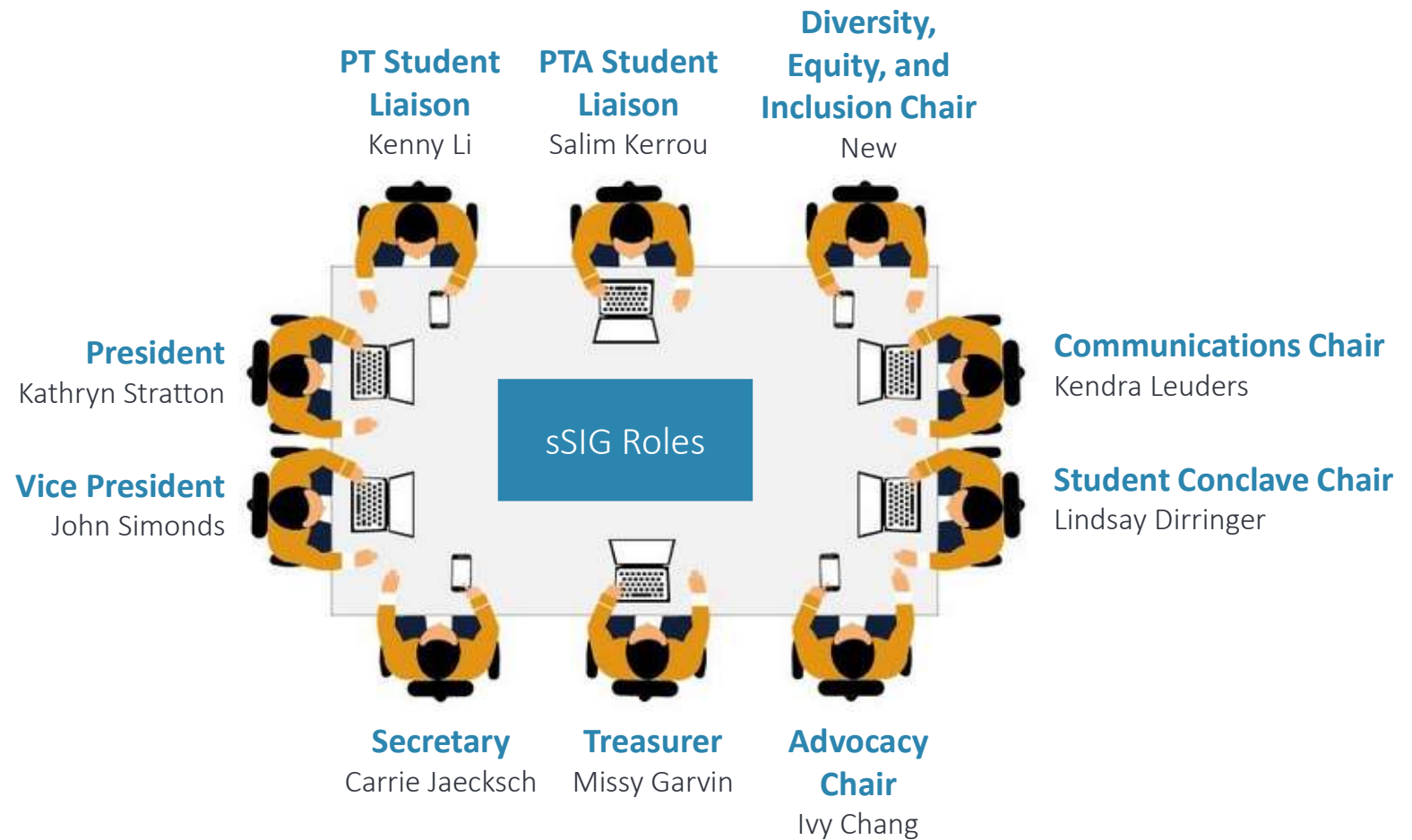
APTA STUDENT ASSEMBLY ROLES (National)

WASHINGTON CORE AMBASSADOR	Held by one student per state. Communicates between the APTA Student Assembly Board of Directors and students in their state.
STUDENT LIAISONS	Student Assembly liaisons are volunteer APTA members who represent the Student Assembly and Student Assembly Board of Directors with designated groups; ACAPT and PT-PAC.
ACAPT LIAISON	The liaison collaborates with ACAPT, the American Council of Academic Physical Therapy, to address student issues, while also promoting awareness of and involvement with ACAPT's role in student education.
PT-PAC LIAISON	PT-PAC is APTA's political grassroots funding network. It provides members with access to legislators who champion physical therapy interests at the federal level. The liaison represents the APTA Student Assembly and raises awareness about PT-PAC.
BOARD OF DIRECTORS	The student board represents and engages with APTA student members who constitute the Student Assembly. Roles include President, VP, Secretary, Director of Membership, Director of Communications, Director of SPTA relations, Student PT delegate, and Nominating Committee chairs.
PROJECT COMMITTEES	Student Assembly project committees are established by the Student Assembly BOD to advance key initiatives in support of the board. Each committee includes 1 or 2 chairs and approx. 5-7 members who are appointed through an annual application process through APTA Engage.

YOUR WA STUDENT SPECIAL INTEREST GROUP (sSIG)



We bring together the PT and PTA students of Washington state around learning and service opportunities to the profession and our communities.





PRESIDENT

Kathryn Stratton, SPT

- Create agenda for monthly meetings
- Maintain communication between members
- Focus the group around the current sSIG event roster
- Promote new ideas for student engagement
- Delegate tasks for project completion

Monthly Time Commitment: 4-8 hours

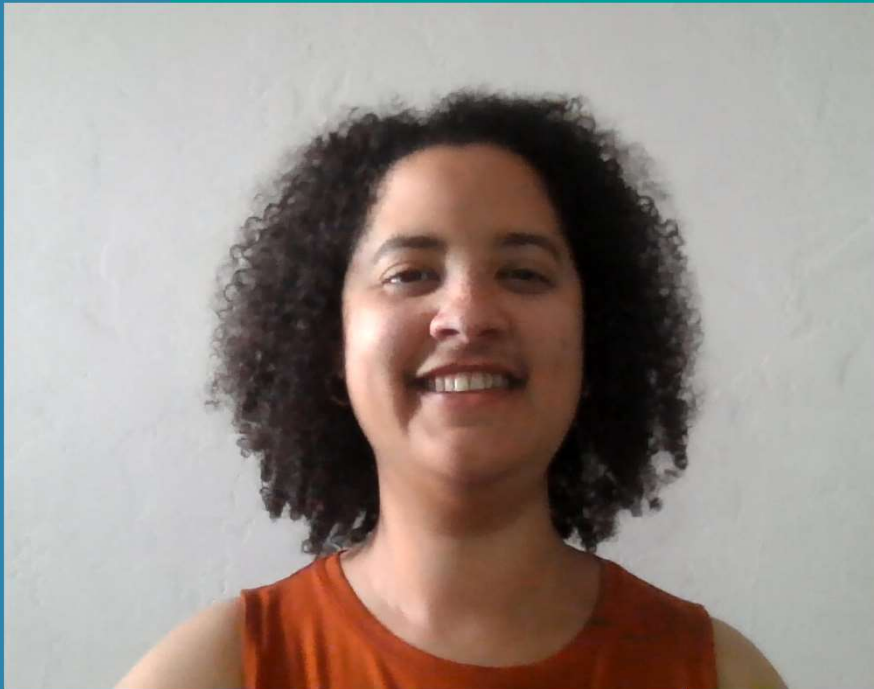


VICE PRESIDENT

John Simonds, PTA

- Support the President and step in to cover the role when necessary
- Work with other officers to plan and execute sSIG events

Monthly Time Commitment: 2-6 hours



SECRETARY

Carrie Jaecksch, PTA

- Take notes during monthly meetings identifying action items and timelines for completion
- Distribute details on sSIG activities to faculty and student contacts at PT and PTA schools across the state
- Organize and maintain online folder structure and documents

Monthly Time Commitment: 3-5 hours



Treasurer

Missy Garvin, SPT

- Manage the sSIG budget
- Pursue fundraising opportunities to support sSIG events

Monthly Time Commitment: 2 hours



Advocacy Chair

Ivy Chang, SPT

- Represent student interests at APTA WA Legislative Committee and WA PT-PAC meetings
- Organize student led advocacy events such as Student Hub at Legislative Impact Day and the National Advocacy Dinner
- Engage students with state and national ways to advocate for the profession

Monthly Time Commitment: 2-6 hours



Student Conclave Chair

Lindsay Dirringer, SPT

- Organize programming for the annual Student Conclave as part of the APTA WA Conference
- Recruit speakers and panelists for topics of interest to students
- Coordinate with APTA WA on administrative aspects of the event

Monthly Time Commitment: 2-6 hours



Communications Chair

Kendra Leuders, SPT

- Disperse information and get students excited about sSIG and the PT profession via social media
- Engage regularly on Instragram, Facebook, Twitter and other platforms to market sSIG events

Monthly Time Commitment: 2 hours



Diversity, Equity & Inclusion (DEI) Chair

New Position

- Act as liaison between ATPA WA and sSIG to advocate for student issues related to DEI
- Attend monthly ATPA Washington DEI committee meetings

Monthly Time Commitment: 3-4 hours



DI·VER·SI·TY

All the ways in which people differ.



EQ·UI·TY

Fair treatment, access, opportunity, and advancement for all people. One's identity cannot predict the outcome.



IN·CLU·SION

A variety of people have power, a voice, and decision-making authority.

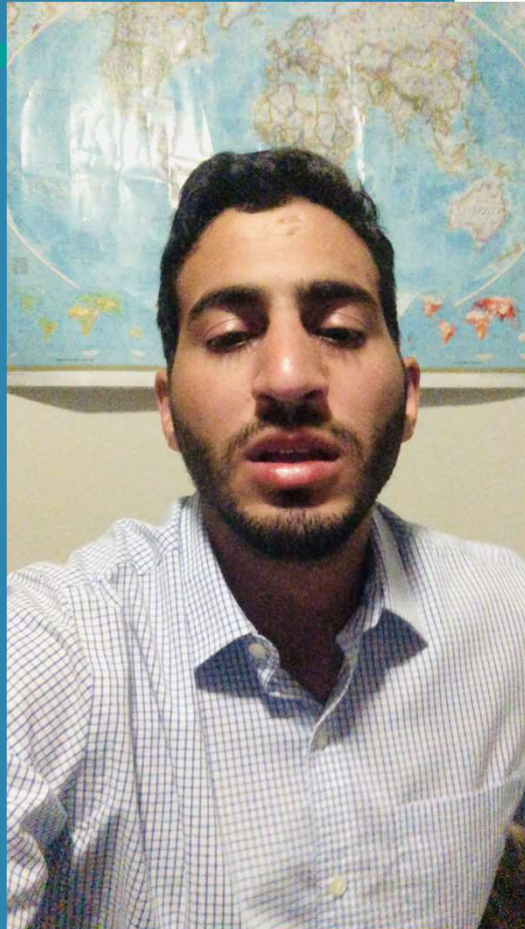


PT Student Liaison

Kenny Li, SPT

- Not part of current election. Role rotates yearly across all WA PT programs, next year will be Eastern Washington University
- Represent PT student interests at APTA WA Board of Directors meetings
- Disseminate relevant information to student peers

Monthly Time Commitment: 4 hours plus attendance at House of Delegates (typically 4-5 days in June)



PTA Student Liaison

Salim Kerrou, SPTA

- Not part of current election. Role rotates yearly across all WA PTA programs, next year will be Spokane Falls Community College
- Represent PTA student interests at APTA WA Board of Directors meetings
- Disseminate relevant information to student peers

Monthly Time Commitment: 4 hours plus attendance at House of Delegates (typically 4-5 days in June)



SPECIAL INTEREST GROUP POSITION SUMMARY

President

Leads the organizing of events and opportunities for the students of Washington state.

Vice President

Supports the President and other officers in planning sSIG events.

Secretary

Manages sSIG project timelines and communicating information and updates to student contacts.

Treasurer

Pursues fundraising opportunities to support sSIG events.

Advocacy Chair

Represents student interests at APTA WA Legislative Committee and PAC meetings, organizes advocacy events.

We bring together the PT and PTA students of Washington state around learning and service opportunities to the profession and our communities.

Student Conclave Chair

Organizes programming for Student Conclave by recruiting speakers and panels and planning activities.

Communications Chair

Disperses information and gets students excited about the sSIG and the PT profession via social media.

Diversity, Equity & Inclusion Chair

*(New role)
Represent student interests on the APTA WA DEI Special Committee.*

PT Student Liaison

Represents PT student interests at APTA WA Board of Directors meetings.

PTA Student Liaison

Represents PTA student interests at APTA WA Board of Directors meetings.

READY TO GET INVOLVED?

- ✓ Advocate for what you are passionate about
- ✓ Build leadership skills
- ✓ Network with other students and APTA WA members
- ✓ A great addition to your resume

If you are now ready and excited to be part of the 2020/2021 Student Special Interest Group, let us know by following the steps on the right.

Roles up for election in sSIG include:

- President
- Vice President
- Secretary
- Treasurer
- Advocacy Chair
- Communications Chair
- Student Conclave Chair
- Diversity, Equity & Inclusion Chair



Fill out the nomination form at:
<https://forms.gle/bPTZwzxU4f22G6Ew5>



Upload a picture of yourself so we know who you are. Indicate Provide a short overview of who you are and why you think you would be the best candidate for the position.



Respond by **Thursday October 1, 2020** to indicate your interest.



Questions? Email ptwassig@gmail.com and we will be happy to connect with you about why you should run!



Connect with us on Social Media



Instagram
@Ptwa_ssig



Facebook
PTWA Student Special Interest Group
APTA Student Members



Twitter
@PTWASSIG



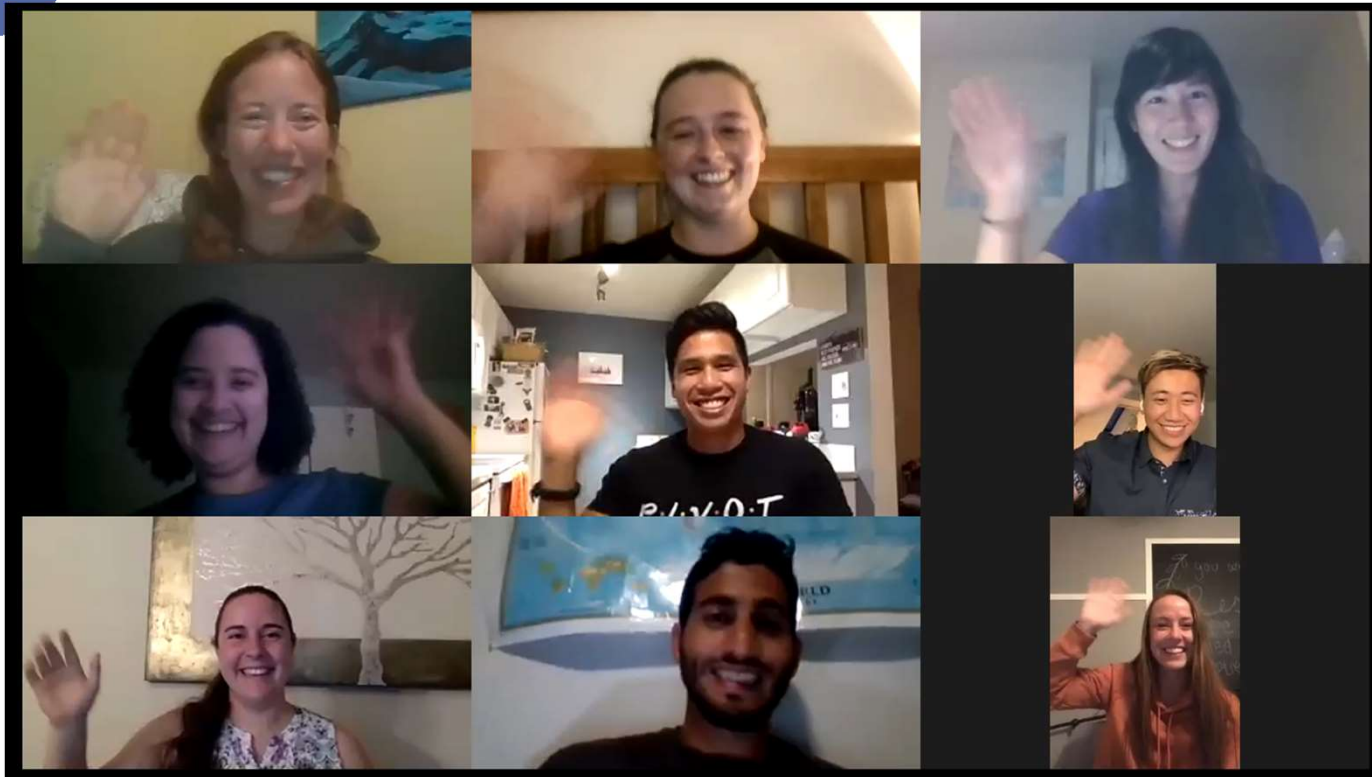
APTA Washington
www.ptwa.org/groups/student-special-interest-group



Contact Us!
ptwassig@gmail.com
Share ideas and feedback on upcoming events

We hope to see you at Student Conclave!!

Saturday October 10, 2020 **FREE for student members!** Register now at www.ptwa.org



Nominate yourself for sSIG! <https://forms.gle/bPTZwzxU4f22G6Ew5>